

# Park Life!

***The newsletter of the  
Manor Park and Hempstead Fields  
Residents' Association***

## ***Heroes***

The Association decided to create a permanent memorial to mark the commitment, dedication, and bravery of Uckfield's key workers during the pandemic.

To do this we planted three cherry trees in the green space known as The Rockery opposite the bottom of Downsview Crescent.

A black granite plaque, kindly donated by CPJ Field, will soon be set in the grass in front of the trees, it will be engraved with a suitable message.

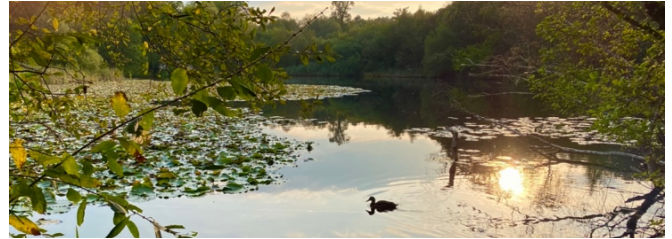
Peter Oliver Homes made a very handsome donation towards the cost of the project as have several generous Association members, including the Woodlands Close Coffee Morning Group.

## ***The Show Must Go On***

Sunday June 12<sup>th</sup> will see the long awaited return of the Big Picnic Lunch. To be held, as usual, on the Uckfield Rugby Club's field. This year we are dedicating it to the Queen's Platinum Jubilee.

Attractions planned include a huge inflatable assault course, a bouncy castle for toddlers, face painting, ice cream, hot dogs and much more.

Why not make a note in your diary now to make sure you don't miss this popular family event.



## ***These Boots are made for Walking***

The lockdowns and the emotional strains and stresses of the pandemic saw many of us wanting to engage with nature. So, we asked local ecologist, Dr Martyn Stenning, to lead small groups of members on woodland walks. These proved to be very popular providing an enjoyable blend of education and recreation.

The success of these walks prompted us to go one step further (!) and launch our Photography Walks.

Local award-winning photographer, Judith Stewart, kindly leads these walks which are pitched for those new to photography as well as those with more experience. To join us on a walk go to page 3 for how to contact us.



## ***WINTER 2022***



Gotta Get a Message to You - some thoughts from our chairman Paul Sparks:

I hope you are all keeping well and looking forward to a better year than the last couple. Whilst writing, the outlook is certainly more encouraging. One of the few benefits of the pandemic is that many of us have got to know our neighbours better and it would be good if we could build on that in the future. If you are aware of any of your neighbours who could benefit from the support and services provided by your Residents' Association such as the Car Surgery Service, then please pass on details to them or let us know. I look forward to meeting many of you at our various events planned for this year or when I am walking around our lovely neighbourhood.

### Day Tripper?

Interested in a trip out, covid permitting?

Looking ahead and with fingers crossed, we are thinking about:

- *Brooklands Museum, Weybridge* – vintage planes, cars and bikes, including Concorde and WW1 and WW2 planes, tickets under £20.
- *Knepp Wildland* – the 3,500 acre estate near Horsham that's pioneering rewilding. Guided afternoon safari tickets approx. £45
- *Wings Museum, Balcombe* – an insight to life in WW2. Under £10
- *Hastings Old Town* – a guided walk to explore its wealth of historic buildings with its many narrow twittens and cat creeps. About £10

NB we will also need to ask for contributions to hire a minibus

Please tell us what might interest you – see page 3 for our contact details

### Let's Get Together

This newsletter is distributed free of charge to every home on Manor Park and Hempstead Fields and to several nearby retirement complexes. It is one of the many services we deliver to our community.

*Peter Oliver Homes* kindly sponsored this edition with a generous donation that covered our printing costs. However, we do rely on our membership fees to cover the bulk of our costs.

Membership costs only £5 per household per year. For an application form contact Peter at [mpfhres@gmail.com](mailto:mpfhres@gmail.com) or post 2 Woodlands Close, TN22 1TS

### Hit and Miss – competition time!

As you will have noticed we have 'hidden' several song titles amongst the caption headings.

Find them and name the artists who performed them to enter the prize draw for a bottle of bubbly!

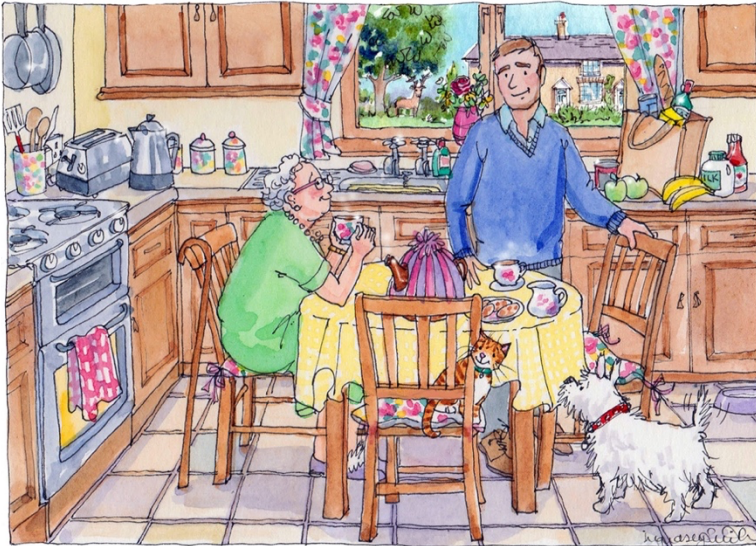
Email your entry to [mpfhres@gmail.com](mailto:mpfhres@gmail.com)  
Or post it to us: 2 Woodlands Close, TN22 1TS.





## That's What Friends are For

We have some very special volunteers who step forward to give a helping hand to those in our community who need a little assistance.



## Lean on Me

Our Good Neighbour Scheme volunteers step in when someone needs a bit of extra company, maybe just a chat over a cup of tea.

They can also help with simple DIY jobs, form filling or possibly assist when you have problems with your iPad or laptop.

**Call 01825 578017**

## Driving in My Car

The Surgery Car Service is there for those that have problems getting to our local GP surgeries – Bird in Eye, Buxted, The Meads or Uckfield Hospital.

**Call 01825 578006**



## Hole in the Ground

Here we see volunteers Dorothy, Paul and Ric hard at work planting the Cherry Trees that will form part of our tribute to the pandemic's key workers.

Paul seems to be enjoying the role of foreman on this occasion!!

## Call Me

To get in touch with us you can:

- Email [mphfres@gmail.com](mailto:mphfres@gmail.com)
- Write to us c/o 2 Woodlands Close, TN22 1TS
- Phone 01825 764287

The Association is extremely grateful to Peter Oliver Homes  
for its continuing support and for sponsoring  
this edition of the newsletter

We also thank the volunteers that deliver these newsletters to you



Peter  
Oliver

Prices have never been higher  
– Call us for a FREE  
VALUATION

01825 703000

**Proudly Sponsoring:**  
**Manor Park and Hempstead  
Fields Residents Association**